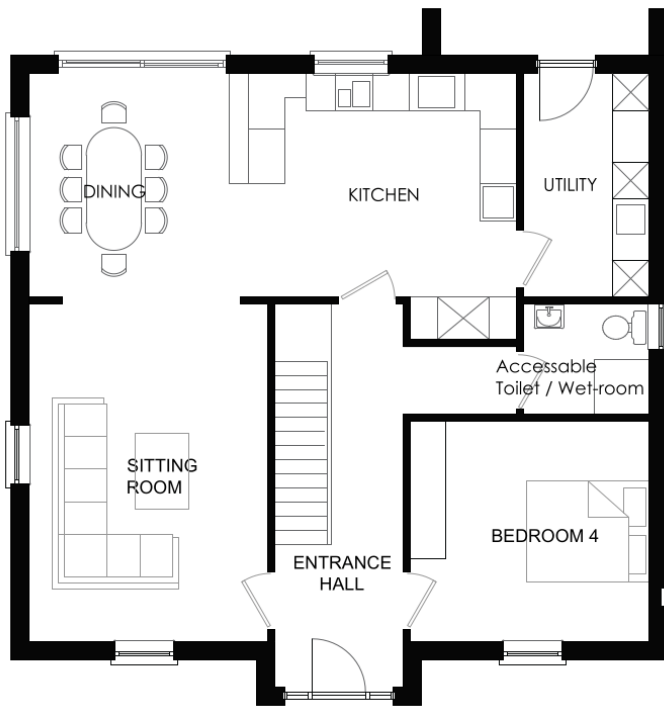


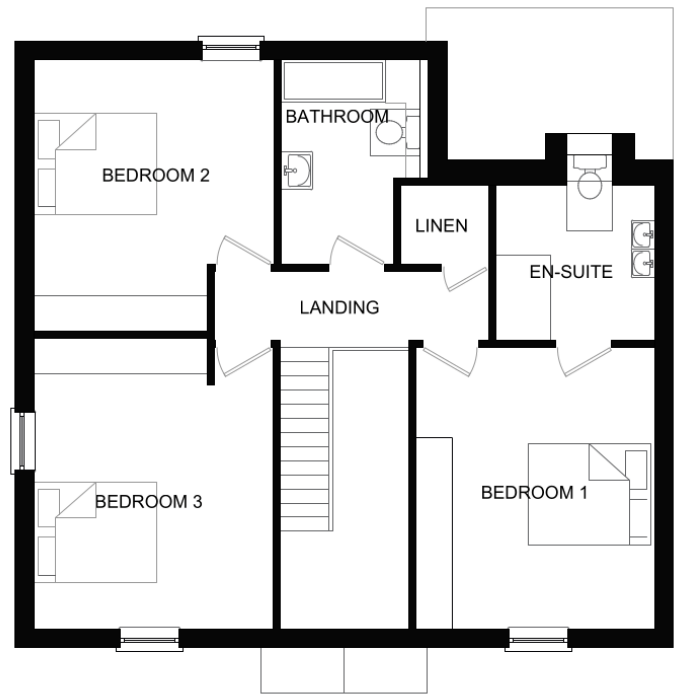


## GLENIDAN

The Glenidan is a two-story, four bedroom detached home that is ideally suited for those homeowners who are just starting out, those looking to up-size, or downsize, or just looking for a quieter lifestyle....



Ground Floor Layout



First Floor Layout

### Interior Home Areas:

- Four (4) Bedrooms: three upstairs; one downstairs
- Living Room
- Dining Room
- Kitchen with an integrated attached island
- Three (3) Full Bathrooms: one of which is an en-suite bathroom; one an accessible bathroom
- Entrance Hall with built-in cupboards under stairs
- Utility / Laundry Room
- Linen Storage Area upstairs

### Outside Home Areas and Landscaping:

- Patio Area in Back Yard
- Fenced Back Yard
- Seeded Back Yard Lawn
- Iron Railings Around Front Lawn / Parking Area
- Shrubby on Pathway to Front Door (Plan Dependent)
- Seeded Front Lawn (Plan Dependent)
- Bitumen Surface Parking Area In Front of Home
- Footpaths and Aprons Around the Home

The Glenidan is priced from €420,000

Gross Floor Area: 172.2 m<sup>2</sup> / 1853 ft<sup>2</sup>

### SCHEDULE OF FLOOR AREAS (sq.m):

SITTING ROOM	21.50	BEDROOM 1	17.86
KITCHEN / DINING	30.00	EN-SUITE	6.90
UTILITY ROOM	7.40	BEDROOM 2	16.14
ACCESSIBLE SHOWER	3.70	BEDROOM 3	18.30
BEDROOM 4	14.00	BATHROOM	7.20
ENTRANCE HALL	15.00	LANDING	5.00
		LINEN	1.85



Sherry Fitzgerald Davitt & Davitt  
Jennifer Walsh,  
Castlepollard Office, Co. Westmeath  
jwalsh@sfdi.ie  
044 966 1000 | 086 394 6428



FORBES BOYLE  
Robert Forbes MIPAV,  
Artane Office, Dublin  
01 8510920 / 087 2363482  
Robert@ForbesBoyle.com